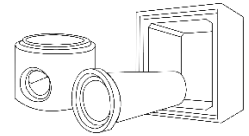




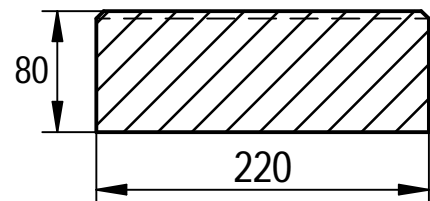
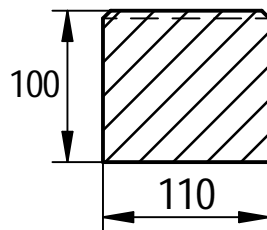
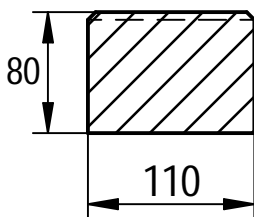
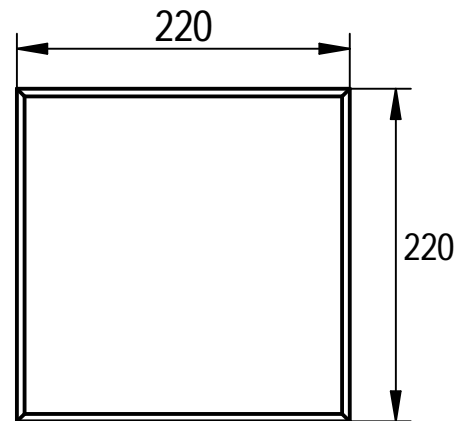
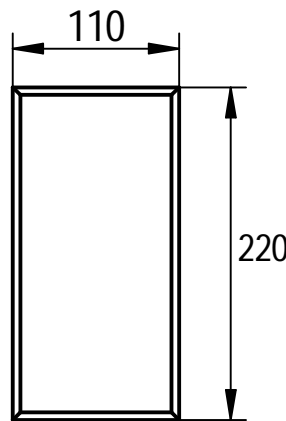
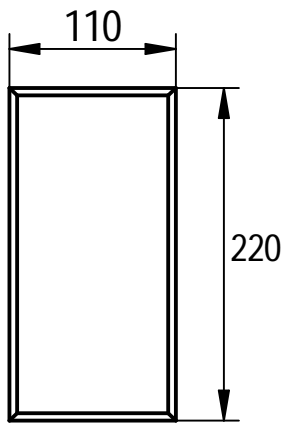
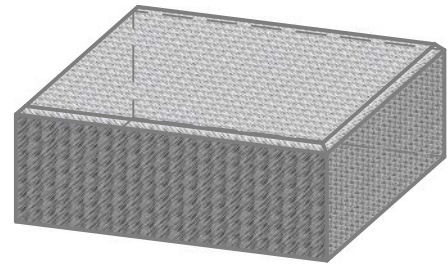
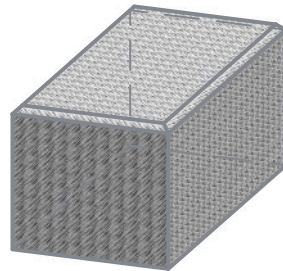
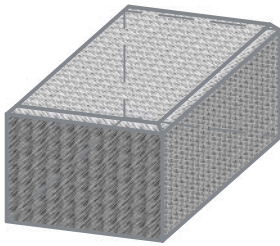
BETON DE CLERCO

PREFABBETON & WATERBEHANDELINGSSYSTEMEN

BETON DE CLERCO NV - Wiedauwkaai 66- 9000 Gent - TEL. +32(0)9 2538296 - info@declercq-beton.be



WATERDOORLATENDE / POREUZE STRAATSTEEN PAVES PERMEABLE / POREUX



Kleuren grijs en zwart
Couleurs gris et noir

101 **BENOR** 121

TECHNISCHE FICHE / FICHE TECHNIQUE		
Doortalendheidsfactor individueel/ Permeabilite individuel $k > 2.7 \times 10^{-5} \text{m/s}$	Gewicht / Poids 3,9-5,0-7,8kg	Aantal / Nombre
Doortalendheidsfactor gemiddeld/ Permeabilite moyenne $k > 5.4 \times 10^{-5} \text{m/s}$	Tekenaar Jo Verbeken	
Sterkteklasse / Classe de resistance BC6	Productie / Production Gent	Formaat A4